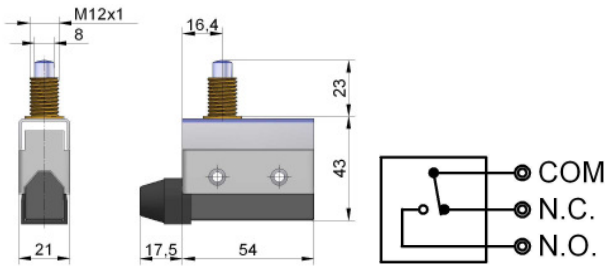


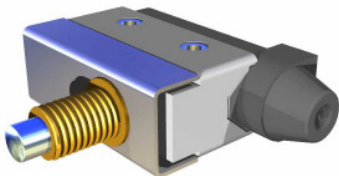
Limit Switch

for butterfly flanges and suction units

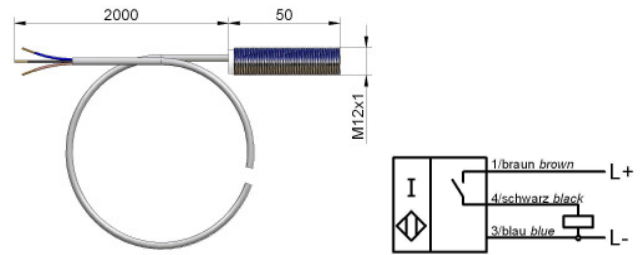
Mechanical Limit Switch



order number	EAFSM
Control voltage at 125V AC	10A res., 6A ind.
Control voltage at 250V AC	10A res., 4A ind.
Control voltage at 115V AC	0,4A res., 0,05A ind.
Expected mechanical durability	10 ⁷ (at 50cpm)
Expected electrical durability	10 ⁵ (at 20cpm)
Ambient temperature	-20°C to +60°C (68-140°F)
Ambient humidity	max. 95% at 20°C (68°F)
Max. operating speed	120cpm
Protection switch	IP 64
Protection connections	IP 60
Switch function	Two way contact
Rated insulation voltage	250V AC
Rated impulse withstand voltage	2,5kV
Switching over voltage	2,5kV
Rated enclosed thermal current	10A
Conditional short-circuit current	100A
Short circuit protection device	10A fuse



Inductive Limit Switch



order number	EAFSI
Operating voltage	10 to 30V
Switching frequency	0 to 1500Hz
Reverse polarity protection	protected
Short-circuit protection	pulsing
Voltage drop	= 3V
Operating current	0 to 200mA
Off state current	0 to 0,5mA typ. 0,1iA
No-load supply current	= 17mA
Indication of the switching state	LED, yellow
Ambient temperature	-25°C to 70°C (77°F-158°F)
Switching element function	PNP make function
Rated operating distance	2mm
Installation	embeddable
Assured operating distance	0 to 1,62mm
Reduction factor r_{Al}	0,3
Reduction factor r_{Cu}	0,2
Reduction factor r_{V2A}	0,7
Core cross-section	0,14mm ²
Protection degree	IP67

