

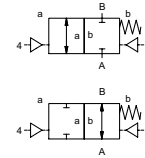
lateral valve type PCD 10

5-PCD 10

valve type with pilot valve



2/2 way valve externally controlled
pressure range PN 0-250 bar
orifice DN 10 mm
connection thread
function valve normally closed **NC**
 valve normally open **NO**



Above stated body materials refer to the valve port connections that get in contact with the media only!

design pressure balanced, with spring return
body materials ① brass ②
 ③ ⑤
 ④ ⑥ stainless steel
valve seat synthetic resin on metal
seal materials NBR PTFE, FPM, CR, EPDM

details needed for main valve

- orifice
- port
- function NC/NO
- operating pressure/Δp
- flow rate
- media
- media temperature
- ambient temperature
- type of actuation

details needed for pneumatic actuation

- nominal voltage
- type of protection
- actuation pressure range min/max
- low wattage coil, actuation pressure range 4-7 bar
- pilot valve type

The valves' technical design is based on media and application requirements. This can lead to deviations from the general specifications shown on the data sheet with regards to the design, sealing materials and characteristics.

If order or application specifications are incomplete or imprecise there exists a risk of an incorrect technical design of the valve for the required application. As a consequence, the physical and / or chemical properties of the materials or seals used, may not be suitable for the intended application.

■ specifications not highlighted are standard
 ■ specifications highlighted in grey are optional

general specifications

ports	PCD	threads G 3/8
function	NC	NO
pressure range	bar	0-250
Kv value	m ³ /h	1,5
vacuum	leak rate	
pressure-vacuum	P ₁ ↔ P ₂	
back pressure	P ₂ > P ₁	
media		gaseous - liquid
abrasive media		
damping	opening	
	closing	
flow direction	A ↔ B	see pressure range
switching cycles	1/min	130
switching time	ms	opening 30-3000 closing 30-3000
media temperature	°C	direct mounted pilot valve 60 remote mounted pilot valve outside temperature range of media max.150°C
ambient temperature	°C	direct mounted pilot valve 50
flush ports		
leak ports		
limit switches		inductive
manual override		
approvals		
mounting		
weight	kg	3,5
additional equipment		

options

electrical specifications

nominal voltage	U _n	DC 24V	special voltage upon request
	U _n	AC 230V 50 Hz	special voltage upon request
power consumption	DC	4,8 W	2,5 W
	AC	pick up 11,0 VA holding 8,5 VA	
protection	IP 65 (P54)	acc. DIN 40 050	
energized duty rating	ED	100%	
connection		plug acc. DIN EN 175301-803 form B, 4 positions x 90° / wire diameter 6-8 mm	
additional equipment		illuminated plug with varistor	
optional	M12x1	connector acc. DESINA	connector acc. VDMA
max. temperature	media	60°C	
	ambient	50°C	
explosion proof	EEx m II T5	nominal voltage U _n	direct current 24 V 3,25 W
		power consumption	alternating current 230 V 50 Hz 2,90 W

options

pneumatic specifications

actuation pressure range	bar	4-10
air consumption	cm ³ /stroke	7
cycle speed		main valve speed variable by throttles on pilot valve
control		preferably 5/2-way pilot valve
actuator ports	2/4	G 1/8

options

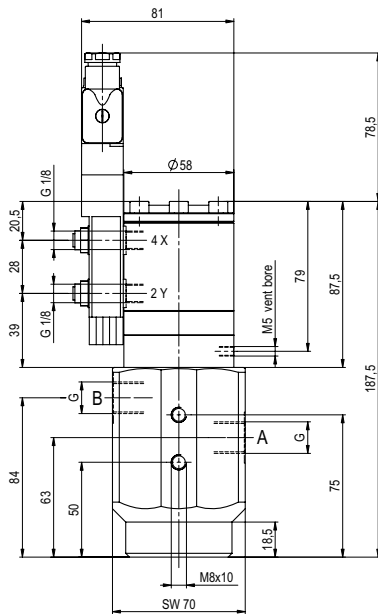
hydraulic specifications

actuation pressure range		
by media		
control		
actuator ports		

options

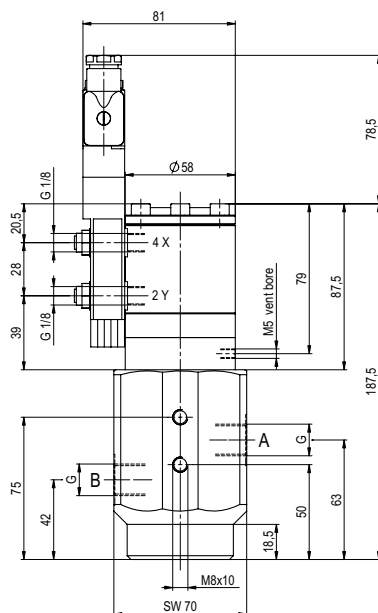
type PCD 10

function: **NC**
closed when not energized

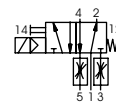


type PCD 10

function: **NO**
open when not energized



pneumatic actuation (separately)



5/2-way-pilot valve
flow rate 350 l/min
pressure range 3-10 bar G 1/8